

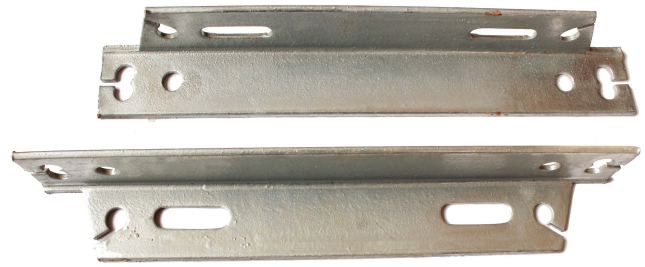


Hebei Rax Industry CO.,LTD

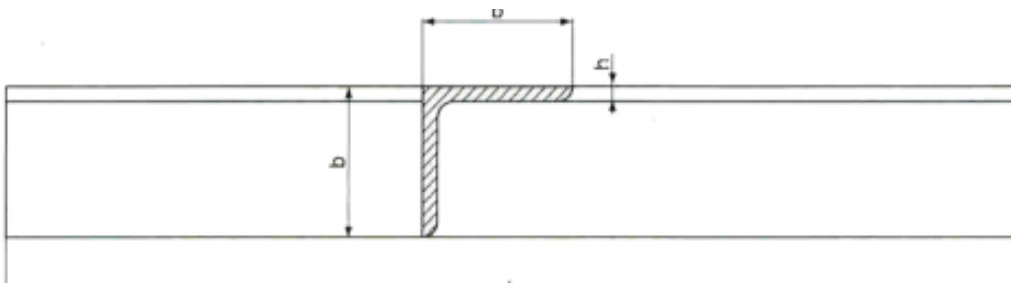
All For Customers, For All Customers

ELECTRICAL CROSS ARM

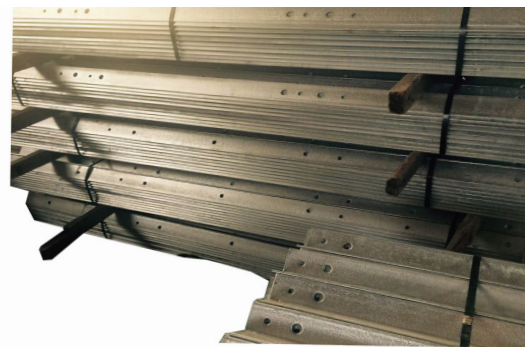
In different application setups, there are different configurations for electrical cross arm. The material is steel. Finish: Hot-dip galvanized. Standard: ASTM123-78



Catalog no.	Size(mm)	Finish	Approximately Weight (Kg./Pcs.)
JY-B0440	65x65x6x508	Hot dip galvanized	2.53
JY-B0440- 01	65x65x6x965	Hot dip galvanized	5.6
JY-B0441	50x50x4x508	Hot dip galvanized	1.53
JY-B0441-01	50x50x4x965	Hot dip galvanized	2.8



Catalog no.	Dimension (mm)			Weight (kg)
	H(mm)	b(mm)	L(mm)	
B01-0038	5	38	990	2.95
B01-0045	4.75	45	3048	12
B01-0050	5	50	2000	10.00
B01-0060	6	60	2000	12.00
B01-0076-10	6.35	76	1702	
B01-0076-20	6.35	76	1830	13
B01-0076-30	6.35	76	2440	17.5
B01-0076-30-2	6.35	76	2440	23.5
B01-0076-40	6.35	76	3350	23.5
B01-0076-50	6.35	76	6100	42.7
B01-0080	8	80	2000	16.5
B01-0100	10	100	2000i	21.00
B01-0125	12	125	2000	26.5



CROSS ARM BRACE



The raw material for crossarm braces is flat steel. The length of the crossarm braces are 20, 26, 28 or 32. The thickness is 1/4", crossarm braces have rounded end. At one end there is a hole of 9/16, while the one at the other end is 7/16.

Catalog no..	Length Inch	Thickness(mm)	Approximately Weight (Kg./Pcs.)	Standard Packing Quantity/Bunckle
JY-B0526L	26-	6	1.13	10
JY-80528L	28	6	1.20	10
JY-B0530L	30-	6	1.23	10

ALLEY ARM

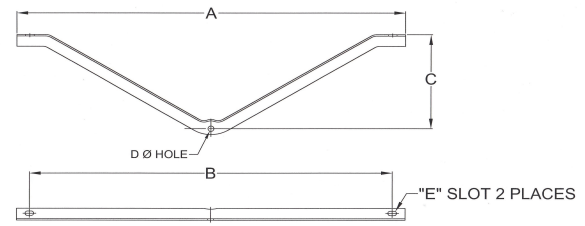


Alley arm are widely used on overhead lines, utility pole, power pole and light pole. The main raw material for alley arm is angel steel and there are 60, 84 and 120" length for the alley arm

Catalog no.	Angle Size(mm)	Length feet(mm)	Diamention A	Diamention B	Approximately
JY-80320-01	L45 X L45 X 5	7 (2,100)	2,075	25	7.73
JY-80320-02	L50 X L50 X 5	7 (2,100)	2,075	25	8.87
JY-80321	L50 x L50 x 6	8 (2,275)	2,250	25	11.42
JY-80322	L50 x L50 x 8	10 (2,875)	2,850	25	19.00

V CROSS ARM

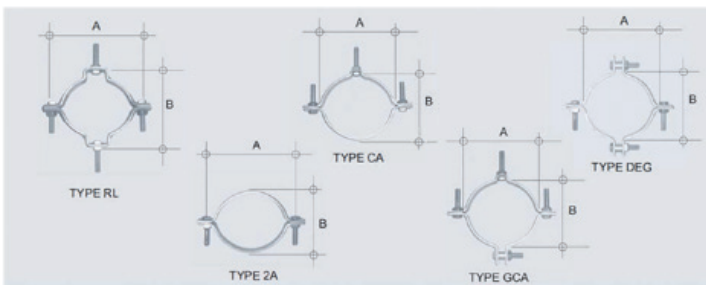
Brace: Angle



Catalog no.	Span Inch(mm)	Drop Inch (mm)	Angle size(mm)	Approximately Weight (Kg./Pcs.)
JY-80643	48 (1,219)	14 (366)	L40 x L40 x 5	4.14
JY-80643-01	48 (1,219)	18 (457)	L40 X L40 X 5	4.40
JY-80644	60 (1,524)	18 (457)	L45 X L45 X 5	6.85
JY-80644-01	72 (1,829)	22 (559)	L50 x L50 x 5	8.20

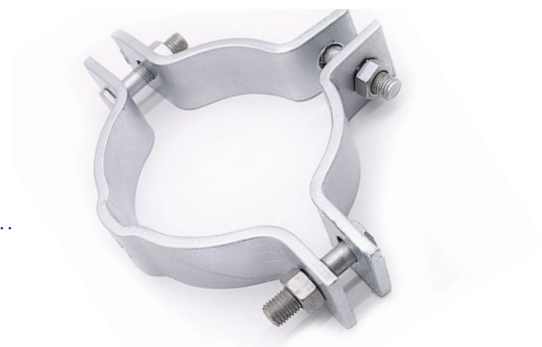
POLE BAND

According to the structure, pole band include single off set pole band and double off set pole band. Pole bands are used to wrap on the pole. Pole fastening clamp can be used with guy wire, stay wire and cable .



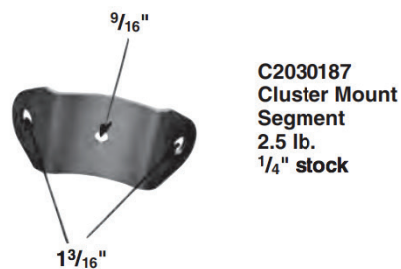
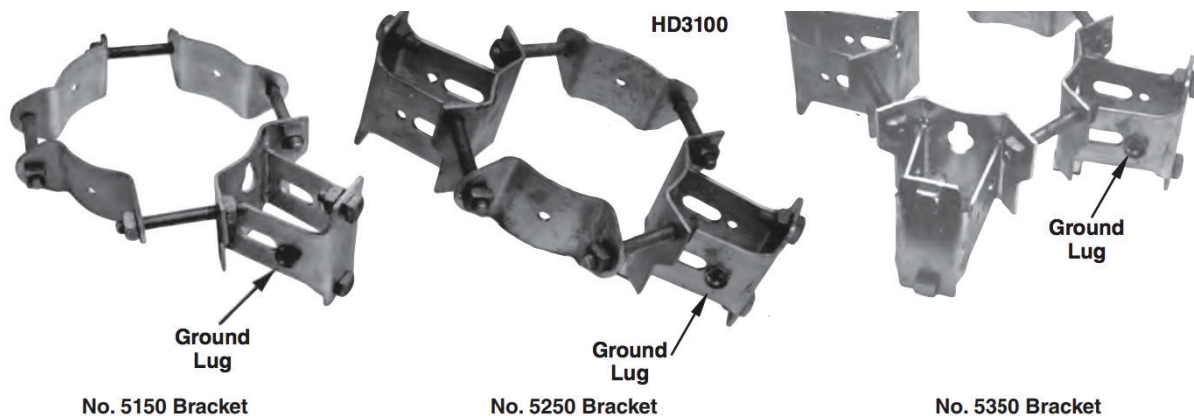
Catalog no..	Rang(mm)	Inch	A (mm)	B (mm)	Width(mm)	Thickness(mm)	Standard packing quantity/bundle
JY-COISOL-06	127 - 152	5- 6	152	127	50	6	5
JY-COISOL-07	152 - 178	6-7	178	152	50	6	5
JY-C0150L-08	178 - 203	7- 8	203	178	50	6	5
JY-COISOL-09	203 -229	8 - 9	229	203	50	6	5
JY-COISOL-10	229 - 254	9 -10	254	229	50	6	5
JY-COISOL-11	254 - 279	10 - 11	279	254	50	6	5
JY-COISOL-12	279 - 305	11 - 12	305	279	50	6	5
JY-COISOL-14	330 - 356	13 - 14	356	330	50	6	5
JY-C0150L-15	356 - 381	14 - 15	381	356	50	6	5

HEAVY DUTY



Catalog no.	Diameter Inch (mm)	Rang(mm)	Inch	Width (mm)	Thickness (mm)	Standard packing quantity/ bundle
JY-COISOH-08	8 (203)	178 - 203	7- 8	64	6	5
JY-COISOH-09	9 (229)	203 -229	8-9	64	6	5
JY-COISOH-10	10 (254)	229 - 254	9 - 10	64	6	5
JY-COISOH-11	11 (279)	254 - 279	10 - 11	64	6	5
JY-COISOH-12	12 (305)	279 - 305	11 - 12	64	6	5
JY-COISOH-13	13 (330)	305 - 330	12 -13	64	6	5
JY-COISOH-14	14 (356)	330 - 356	13 - 14	64	6	5

TRANSFORM MOUNTING BRACKET



A. FOR MOUNTING OF 3 TO 50 KVA TRANSFORMER

Catalog No.	Number of Bracket	Number of Bracket	Number of dummy plate	Weight/Pcs	Packing Quantity/ Bundle
JY-C0251-01	1	1	3	7.00	1
JY-C0251-02	2	2	2	9.70	1
JY-C0251-03	3	3	1	12.40	1

B. FOR MOUNTING OF 75 TO 167 KVA TRANSFORMER

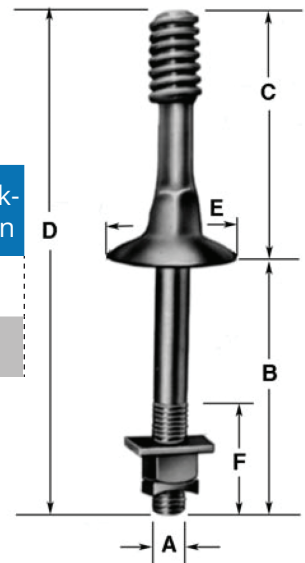
Catalog no.	Number of Bracket	Number of Bracket	Number of Dummy Plate	Weight/Pcs	Packing Quantity/ Bundle
JY-C0252-01	1	2	6	7.20	1
JY-C0252-02	2	4	4	10.10	1
JY-C0252-03	3	6	2	13.00	1

INSULATOR PIN & POLE TOP PIN

Insulator pin is used with pin insulators on 11kv/33kv distribution lines, power transmission lines, over head power lines. The pole top pin slotted channel sections are mounted against the pole by 5/8-inch bolts. The design of pole top pin is to allow easy removal for replacement of insulator units or fittings without the necessity to remove the insulator strings from the crossarms.

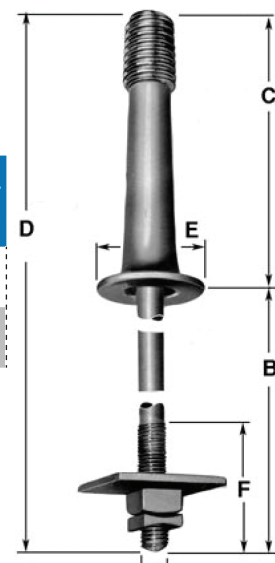
HIGH VOTAGE STEEL PIN

Catalog no.	A Inch	B Inch	C Inch	D Inch	Weight kg/100pcs	Standard packing Qty/carton
JY-D0156-01	9	7	3/4	1-1/8	295.00	15
JY-D0156-02	9	6-1/2	3/4	1	210.00	15

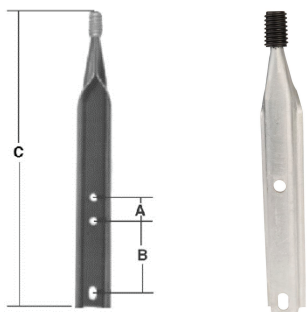


HIGH VOLTAGE STEEL PIN

Catalog no.	A Inch (Lead thread)	F (mm)	C (mm)	D (mm)	Weight kg/100pcs	Standard packing Qty/Bundle
JY-D0359-01	1	44	203	305	220.00	10
JY-D0359-02	1-3/8	54	254	305	184.00	10



POLE TOP PIN



Catalog no..	A Inch (Lead thread)	B (INCH)	C (INCH)	Weight kg/100pcs	Standard packing Qty/carton
JY-00258-01	3	5	18	140.00	15
JY-00258-02	3	8	20	180.00	15

DEADEND CLEVIS

Catalog no.	CLEVIS OPENING	ANSI Insulator	weight/100pcs	Weight kg/100pcs
JY-F0213	85.7	53-2& 53-3	49.00	50



Catalog no.	Description	weight/100pcs	Standard package quantity /carton
JY-F0522	Flat Steel per ASTM A36	125.00	15

Catalog no.	Description	Weight/100pcs	Standard Package Quantity /Carton
JY-F0623-01	150	50.50	40
JY-F0623-02	225	65.5	35



Catalog no.	Description	weight/100pcs	Standard package quantity /carton
JY-F0710A	For use with ANSI Insulators Class 53-2, 53-3, &	60.00	18



SECONDARY CLEVIS



Catalog no.	CLEVIS OPENING	Width	weight/100pcs	Standard package quantity /carton
JY-F0710B	For use with ANSI Insulators Class 53-2	66	67	25

Catalog no.	A	B	C	D	E	Weight/ 100Pcs	Standard pack- age Quantity / Carton
JY-F0315	126	16	38	88	4.5	60.00	50



SECONDARY RACK, HEAVY DUTY (EXTENDED BACK)



Catalog no.	NO. of wire mm	Wire Spacing	Length mm	Weight/ 100pcs	Standard pack- age quantity / carton
JY-F0420- H3	3	200	605	360	5
JY-F0420- H2	2	200	450	204	5

SECONDARY RACK MEDIUM DUTY

Catalog no..	NO. of wire mm	Wire Spacing	Length mm	Weight/100pcs	Standard Package Quantity /Carton
JY-F0421-MD3	3	200	524	250	5
JY-F0421- MD2	2	200	340	160	5

SECONDARY RACK LIGHT DUTY

Catalog no.	NO. of wire mm	Wire Spacing	Length mm	Weight/ 100pcs	Standard Package Quantity /Carton
JY-F0421-L3	3	200	524	250	5
JY-F0421-L2	2	200	340	160	5



GUY CLAMP

RAX Guy clamp is mainly used on the communication line. It used together with the stay wire and anchor rod to make the pole stable. When the stay wire goes across the anchor rod, the 3 bolt clamp bites the end of the stay wire to prevent the stay wire from creeping down.



JY-5055



JY-7902



JY-7903



JY-7904



JY-7901



JY-6449

JY-6450



JY-6460

TYPE	Length	Width	Product Finish	Material	Note	Weight	Accommodates
JY-5055	1 15/16"	1 9/16"	Galvanized, ASTM A-153	Steel	One bolt 1/2" guy clamp	0.6 lbs	1/4" to 7/16"
JY-Straight 6450	6" (152 mm)	1 9/16"	Galvanized, ASTM A-153	Steel	Three 1/2" Carriage Clamping Bolts	2.12 lbs	1/4" to 7/16"
JY-Straight 6460	6" (152 mm)	2 1/8"	Galvanized, ASTM A-153	Steel	Three 5/8" Carriage Clamping Bolts	4.05 LBS	3/8" to 5/8"
JY-Straight 6461	6" (152 mm)	1-21/32"	Galvanized, ASTM A-153	Steel	Three 5/8" Carriage Clamping Bolts	2.4 lbs	5/16" to 1/2"
JY-Straight 6462	4" (102 mm)	1 21/32"	Galvanized, ASTM A-153	Steel	Two 5/8" Carriage Clamping Bolts	1.74 lbs	5/16" to 1/2"
JY-Straight 7901	2 1/2"		Galvanized, ASTM A-153	Steel	5/8" Mounting Bolt	0.66 lbs	1/4" to 7/16"
JY-Angled 7902L	7" (178 mm)		Galvanized, ASTM A-153	Steel	5/8" Mounting Bolt	2 lbs	1/4" to 7/16"
JY-Angled 7902R	7" (178 mm)		Galvanized, ASTM A-153	Steel	3/4" Mounting Bolt	1.97 lbs	1/4" to 7/16"
JY-Straight 7903	5 3/4"		Galvanized, ASTM A-153	Steel	5/8" Mounting Bolt	1.83 lbs	1/4" to 7/16"
JY-Straight 7903L	5 3/4"		Galvanized, ASTM A-153	Steel	5/8" Mounting Bolt	1.57 lbs	1/4" to 7/16"
JY-Angled 7904	5 3/4"		Galvanized, ASTM A-153	Steel	3/4" Mounting Bolt	1.74 lbs	1/4" to 7/16"

SECONDARY RACK LIGHT DUTY

Catalog no.	Weight/ 100pcs	Standard package Qty/ Carton
JY-G0206	43	60
JY-G0206- 01	Press steel	50



GUY ATTACHMENT



Catalog no.	Steel size(mm)	Weight/100pcs	Standard packing Qty/carton
JY-G0851	75 X 6	145.00	50
JY-G0852	50 X 6	71.00	50
JY-G0853	44 X 6	147.00	20

GUY CLAMP

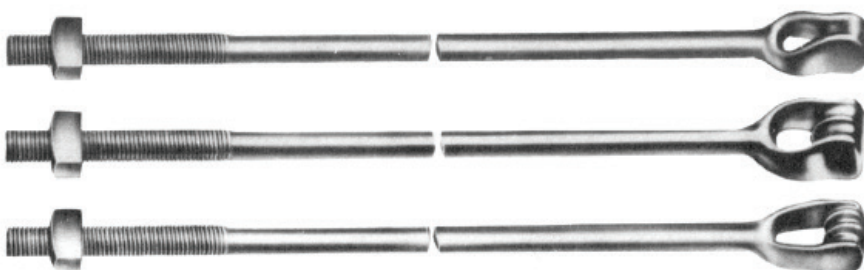
Guy thimble is usually assembled as an accessory. It is also used on stay rod to connect the guy

Catalog no.	Strand Size(Inch)	A	B	L	Thickness (mm)	Weight/ 100pcs	Standard package Qty/ Carton
JY-G0750- 38	3/8	20	30	55	3.0	10.00	250
JY-G0750-12	1/2	25	40	80	3.0	12.40	150
JY-G0750-58	5/8	35	50	90	3.0	15.00	150



ANCHOR ROD

Anchor rods are dropped forged to single or double strand eyes. Alternatively anchor rods are furnished with oval eyes together with an equivalent number of wire strand thimble



Rod Diameter	Thimble eye (mm)			Twin Eye(mm)			Triple eye (mm)		
	Height of the head	Eye diameter	Head width	Height of the head	Eye diameter	Head width	Height of the head	Eye diameter	Head width
5/8	18	14	38	24	6	46	40	6	67
3/4	21	18	41	25	6	50	40	6	69
1	28	24	50	32	8	60	40	6	75

FORGED EYE SHAFT

Guy thimble is usually assembled as an accessory. It is also used on stay rod to connect the guy



Thimble eye (mm)			Twin Eye(mm)			Triple eye (mm)		
Shaft diameter (inch)	Eye diameter	Head width	Height of the head	Eye diameter	Head width	Height of the head	Eye diameter	Head width
3/4	6	6	G1501-06	474.00	G1504 -06	464.00	G7207-06	
	7		G1501-07	530.00	G1504-07	540.00	G7207-07	
	8		GISOI -08	588.00	G1504-08	598.00	G7207-08	
	6	8	G1502-06	543.00	GISOS-06	552.00	G7208-06	568
	7		G1502 -07	598.00	G1505-07	609.00	G7208-07	632
	8		G1502-08	657.00	GISOS-08	665.00	G7208 -08	685
1	7	8	G1503-07	918.00	G1506-07	1012	G7209-07	
	8		G1503-08	1,091.00	G1506-08	1129	G7209-08	
	9		G1503-09	1,212.00	G1506-09	1245	G7209 - 09	
	10		G1503-10	1,324.00	G1506-10	1362	G7209-10	

GUY BOUND CLAMP

Guy bound clamps are used when down guy ,also cervice as ground. It maintains a firm contact between the guy strand and the anchor rod.

Catalog no.	Weight/ 100pcs	Standard package Qty/ Carton
5/8	G1430 - 5/8	G1430E- 5/8
3/4	G1430 - 3/4	G1430E- 3/4
1	G1430 - 1	G1430E-1



ANCHOR EXPANDING 8 WAY

Anchor expanding 8 way is assembled together with anchor rod to firm the pole on the ground



Catalog no.	NO. of wire mm	Wire Spacing	Length mm	Weight/ 100pcs	Standard package QTY /Carton
JY-G1630-06	6	5/8	64	231	5
JY-G1630-07	7	5/8	92	310	5
JY-G1630-08	8	5/8	135	390	5
JY-G1634-08	8	3/4	135	435	5
JY-G1631-08	8	1	135	435	5

CROSS-PLATE ANCHOR

Cross-plate anchor for 16inch hole is used with 5/8 or 3/4 diameter rod

Catalog no.	Anchor type	Rod diameter	Anchor Hole size	Area	Weight	Standard pkg Qty/Carton
JY-G1801	Bust Anchor, Expanding Anchor	0.625" (15.9 mm) 0.75" (19.1 mm)	16" (406 mm)	150 sq in (968 sq cm)	463.00	6



CROSS-PLATE ANCHOR

Reinforcing plate prevents damage to 4inch x5inch or wood 6"x 8"from tightened nuts. The design has a pressed rib and is normally used on the side of the crossarm.

Catalog no.	Base Plate Inch	Rod Diameter (Inch)	Area expand top plate Sq. Inch	Weight/ 100pcs	Standard pkg Qty/Carton
JY-G1745	4"x 5"	13/16"	3/16"	74.00	25
JY-G1768	6"x 8"	15/16"	1/4 "	123.00	25



GROUND ROD

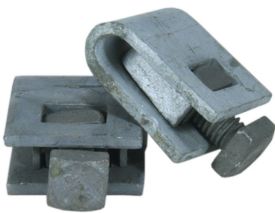
Rod Size (inch)	Length (feet)	Catalog no.	Weight/ 100pcs	Standard pkg Qty/ bundle	Catalog no.	Weight/ 100pcs	Standard pkg Qty/ Carton	Catalog no.	Weight/ 100pcs	Standard pkg Qty/ bundle
1/2	3	HOIII-03	78.20	10	H0112-03	78.20	10	H0113-03	103.00	10
	4	HOIII-04	104.50	10	H0112-04	104.50	10	H0113-04	129.00	10
	5	HOIII-05	130.50	10	H0112-05	130.50	10	H0113-05	154.00	10
	6	HOIII-06	156.50	10	H0112-06	156.50	10	H0113-06	180.00	10
5/8	5	HOIIS-05	197.50	10	H0116-05	197.50	10	H0117-05	221.00	5
	6	HOIIS-06	236.00	10	H0116-06	236.00	10	H0117-06	260.00	5
	8	H0115-08	315.00	5	H0116-08	315.00	5	H0117-08	340.00	5
	10	HOIIS-10	394.00	5	H0116-10	394.00	5	H0117-10	415.00	5
3/4	7	H0120-07	399.00	5	H0121-07	399.00	5	H0122-07	421.00	5
	8	H0120-08	456.00	5	H0121-08	456.00	5	H0122-08	480.00	5
	10	H0120-10	570.00	5	H0121-10	570.00	5	H0122-10	590.00	5

CABLE MESSENGER HANGER

Catalog no.	Weight/100pcs	Standard Packageing /carton
JY-J0109	147.50	20



GROUND STRAND CLAMP



Catalog no.	Weight/100pcs	Standard Packageing /carton
JY-J0217	30.00	100

CROSSOVER CLAMP

Catalog no.	Length	Width	Thickness	weight/100pcs	Standard Packageing / carton
JY-J0207	83	38	12	60	35

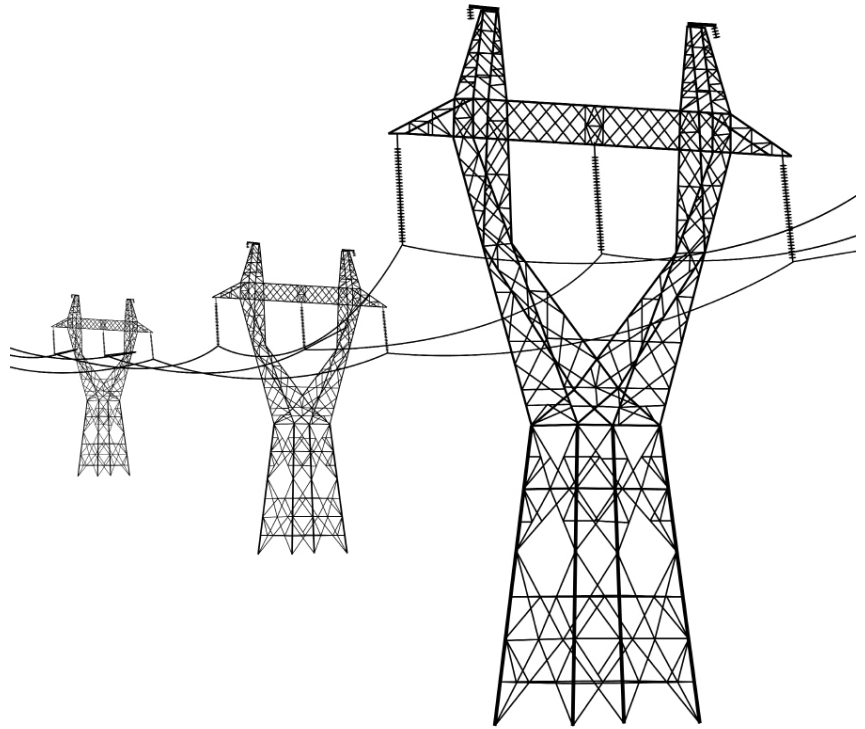


WALL STRAP GUY EYE



Catalog no.	Hole Dia. (mm)	No. Of hole	L	T	W	C	D	weight/100pcs	Standard Pack-ageing /carton
JY-J0335 - 01	14	2	422	8	34	203	18	1.04	25
JY-J0335 - 02	14	3	610	8	34	203	18	1.5	20

SERIOUS 2 STRING HARDWARE



DOUBLE ARMING PLATE/YOKE PLATE

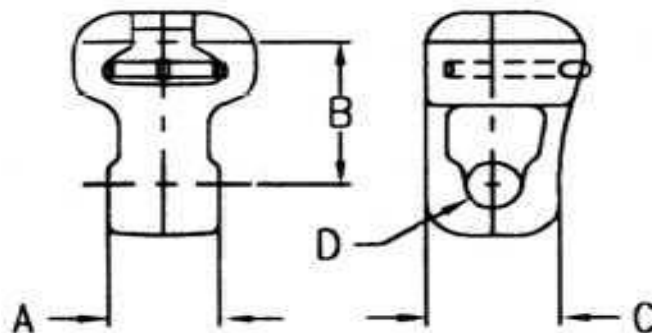
Yoke plate is a string hardware which used to couple the electrical clevis, socket tongue or insulators.



Catalog no.	Steel size Inch	Length Inch	Hole	Slot	Weight kg/100pcs	Standard packing Qty/ Bundle
JY-00400-01	4 X 1/2	24	13/16	13/16 X 3/12	563.00	5
JY-00400-02	4 X 1/4	17	11/16	11/16 X 3	210.00	10

BALL SOCKET

Socket clevis is also called socket tongue. It is widely used on the transmission line, overhead line and power line. The socket clevis is an indispensable pole line hardware which connects the tension clamp and socket type insulator.



Catalog no.	ANSI Class	A	B	C	D	Ultimate strength LBS	Weight kg/100pcs	Standard packing Qty/carton
JY-E0212	52-3 Only	2-1/8	1/2	1-3/4	11/16	16,000	53.00	50
JY-E0258	52-3 Only	2-1/8	5/8	1-5/8	11/16	16,000	72.00	40
JY-E0234	52-3 & 52-5	2-1/8	3/4	1-3/4	11/16	25,000	81.00	40
JY-E0278	52-3 & 52-5	2-1/8	7/8	1-5/8	11/16	25,000	81.00	40
JY-E0225	52-3 & 52-5	3	1-1/4	2	11/16	30,000	104.00	35

BALL CLEVIS

Ball clevis is one kind of string hardware which connects the socket insulator or socket tongue by the ball head. According to the different shapes, there is another type called Y clevis.

Catalog no..	ANSI Class	A	B	C	Ultimate strength LBS	Weight kg/100pcs	Standard packing Qty/carton
JY-E0458-01	52-3	2-1/2	4	5/8	30,000	56.30	35
JY-E0458-02	52-5	2-1/2	4	23/32	30,000	56.35	35
JY-E0458-03	52-3	1-1/2	3	5/8	30,000	48.10	35
JY-E0458-04	52-5	1-1/2	3	23/32	30,000	48.15	35



“Y” TYPE

Catalog no..	ANSI Class	A	B	C	Ultimate strength LBS	Weight kg/100pcs	Standard packing Qty/carton
JY-E0559	52-3	1-1/2	1-1/2	1-1/2	30,000	48.00	25



“U CLEVIS



Catalog no.	A	B	C	D	E	F	G	Breaking strength ibs	Weight kg/100pcs	Standard packing Qty/ carton
JY-E0613	2-1/2	5/8	1-3/4	11/16	7/8	13/16	1-1/8	20,000	65.00	40
JY-E0614	2-5/8	7/8	1-1/2	11/16	7/8	13/16	1-1/16	25,000	70.00	40
JY-E0615	3-1/8	5/8	1-5/8	11/16	7/8	13/16	1-1/12	30,000	75.00	40

FASTENNER

Industrial fastener includes oval eye bolt, thimble eye bolt, pigtail eye bolt, double arming bolt, U bolt, hex bolt and nut, eye nut, square head bolts and nuts, square washers. All the industrial fasteners are hot dip galvanized according to ISO 1461 or ASTM 153. The main process in making the industrial fasteners are hot forged.

SQUAREHEAD BOLT

1 / 2 INCH DIAMETER

Minimum Tensile Strength: 35,000 Kg



Catalog no.	Bolt Length inch(mm)	Thread Length Inch(mm)	Approx. Weight (Kg./1100 Pcs.)	Weight/ 100pcs
JY-A0112-1.5	1-1/2 (38)	1-1/4 (32)	7.70	250
JY-A0112-02	(50)	1-3/4 (44)	8.70	200
JY-A0112-2.5	2-1/2 (63)	2-1/4 (58)	10.00	200
JY-A0112-03	(75)	2-3/4 (69)	11.00	200
JY-A0112-04	(100)	(75)	13.00	200
JY-A0112-05	(125)	(75)	15.00	200
JY-A0112-06	(150)	(75)	17.00	100
JY-A0112-08	(200)	(100)	21.00	100
JY-A0112-10	(250)	(100)	25.00	100
JY-A0112-12	(300)	(150)	29.00	100
JY-A0112-14	(350)	(150)	33.00	75
JY-A0112-16	(400)	(150)	37.00	75
JY-A0112-18	(450)	(150)	41.00	80
JY-A0112-10	(250)	(100)	25.00	100
JY-A0112-12	(300)	(150)	29.00	100
JY-A0112-14	(350)	(150)	33.00	75
JY-A0112-16	(400)	(150)	37.00	75
JY-A0112-18	(450)	(150)	41.00	80

5/8 INCH DLAMETE

Minimum Tensile Strength: 5,680 Kg

Catalog no.	Bolt Length inch(mm)	Thread Length Inch(mm)	Approximately Weight (Kg./1100 Pcs.)	Standard Pkg. Qty. 1 Carton
JY-A0158-05	5 (125)	(150)	25.00	100
JY-A0158-06	(150)	(150)	29.00	60
JY-A0158-08	(200)	(150)	35.00	65
JY-A0158-10	(250)	(150)	42.00	50
JY-A0158-12	(300)	(150)	48.00	50
JY-A0158-14	(350)	(150)	53.00	50
JY-A0158-16	(400)	(150)	61.00	50
JY-A0158-18	(450)	(150)	68.00	50
JY-A0158-20	(500)	(150)	74.00	50
JY-A0158-22	(550)	(150)	81.00	50
JY-A0158-24	(600)	(150)	86.25	50
JY-A0158-26	(650)	(150)	93.50	10/ bundle
JY-A0158-28	(700)	(150)	96.50	10/ bundle

3/4 INCH DIAMETER

Minimum Tensile Strength: 8,340 Kg

Catalog no.	Bolt Length (inch mm)	Thread Length Inch(mm)	Approximately Weight (Kg./1100 Pcs.)	Standard Pkg. Qty. 1 Carton
JY-A0134-08	8 (200)	4 (100)	51.00	51.00
JY-A0134-10	10 (250)	4 (100)	61.00	61.00
JY-A0134-12	12 (300)	6 (150)	71.00	71.00
JY-A0134-14	14 (350)	6 (150)	80.00	80.00
JY-A0134-16	16 (400)	6 (150)	90.00	90.00
JY-A0134-18	18 (450)	6 (150)	100.00	100.00
JY-A0134-20	20 (500)	6 (150)	110.00	110.00
JY-A0134-22	22 (550)	6 (150)	116.00	116.00
JY-A0134-24	24 (600)	6 (150)	122.00	122.00
JY-A0134-26	26 (650)	6 (150)	128.00	128.00

7 /8 INCH DIAMETER

Minimum Tensile Strength: 11,550 Kg.

Catalog no.	Bolt Length (inch mm)	Thread Length Inch(mm)	Approximately Weight (Kg./1100 Pcs.)	Standard Pkg. Qty. 1 Carton
JY-A0178-14	14 (350)	6 (150)	6 (150)	25
JY-A0178-16	16 (400)	6 (150)	6 (150)	25
JY-A0178-18	18(450)	6 (150)	6 (150)	25
JY-A0178-20	20(500)	6 (150)	6 (150)	25
JY-A0178-22	22(550)	6 (150)	6 (150)	25

BRACE BOLT

Catalog no.	Diameter (inch)	Bolt Length inch(mm)	Thread Length Inch(mm)	Approx. Weight (Kg./1100 Pcs.)	Standard Pkg. Qty./ Carton
JY-A0238-4.5	3/8	4-1/2(113)	2(50]	9.60	250
JY-A0212-4.5	1/2	4-1/2(113)	2(50]	18.10	250



CARRIAGE BOLT

HOT DIP GALVANIZED

3/8 INCH DIAMETER

Minimum Tensile Strength: 3,500 Kg



Catalog no.	Bolt Length inch(mm)	Thread Length Inch(mm)	Approx. Weight (Kg./1100 Pcs.)	Standard Pkg. Qty. / Carton
JY-A0338-03	3 (75)	2(50)	7.00	150
JY-A0338-04	4 (100)	3(75)	6.10	150
JY-A0338-4.5	4-1/2 (113)	3(75)	6.70	150
JY-A0338-05	5 (125)	3(75)	7.10	150
JY-A0338-5.5	5-1/2 (138)	3(75)	9.20	150
JY-A0338-06	6 (150)	3(75)	9.20	150

1 /2 INCH DIAMETER

Minimum Tensile Strength: 3,500 Kg

Catalog no.	Bolt Length inch(mm)	Thread Length Inch(mm)	Approx. Weight (Kg./1100 Pcs.)	Standard Pkg. Qty. / Carton
JY-A0312-4.5	4-1/2 (113)	3(75)	13.00	200
JY-A0312-05	5 (125)	3(75)	13.50	200
JY-A0312-5.5	5-1/2 (138)	3(75)	15.60	200
JY-A0312-06	6(150)	3(75)	16.30	200
JY-A0312-07	7 (175)	4(100)	18.60	200
JY-A0312-08	8 (200)	4(100)	20.90	200
JY-A0312-4.5	4-1/2 (113)	3(75)	13.00	200

DOUBLE ARMING BOLT**HOT DIP GALVANIZED**

As all thread bolts go through the pole, the two ends of the double arming bolt will be locked and secured by nut and washer.

**1 / 2 INCH DIAMETER** Minimum Tensile Strength: 3,500 Kg

Catalog no.	Bolt Length	Approx. Weight (Kg./1100 Pcs.)	Standard Pkg. Qty. /Carton
JY-A0412-10	10 (250)	10 (250)	75
JY-A0412-12	12 (300)	12 (300)	70
JY-A0412-14	14 (350)	14 (350)	65
JY-A0412-16	16 (400)	16 (400)	65

5/8 INCH DIAMETER Minimum Tensile Strength: 5,680 Kg

Catalog no.	Bolt Length	Approx. Weight (Kg./1100 Pcs.)	Standard Pkg. Qty. /Carton
JY-A0458-10	10 (250)	49.00	40
JY-A0458-12	12 (300)	56.00	50
JY-A0458-14	14 (350)	62.00	35
JY-A0458-16	16 (400)	69.00	40
JY-A0458-18	18 (450)	75.00	40
JY-A0458-20	20 (500)	82.00	40
JY-A0458-22	22 (550)	88.00	40
JY-A0458-24	24 (600)	95.00	40
JY-A0458-26	26 (650)	101.00	10 / bundle
JY-A0458-28	28 (700)	108.00	10 / bundle
JY-A0458-30	30 (750)	114.00	10 / bundle
JY-A0458-32	32 (800)	121.00	10 / bundle

5/8 INCH DIAMETER Minimum Tensile Strength: 8,340 Kg.

Catalog no.	Bolt Length	Approx. Weight (Kg./1100 Pcs.)	Standard Pkg. Qty. /Carton
JY-A0434-12	12 (300)	58.00	35
JY-A0434-14	14 (350)	66.00	30
JY-A0434-16	16 (400)	77.00	35
JY-A0434-18	18 (450)	86.00	35
JY-A0434-20	20 (500)	96.00	35
JY-A0434-22	22 (550)	105.00	35
JY-A0434-24	24 (600)	115.00	30
JY-A0434-26	26 (650)	124.00	10 / bundle
JY-A0434-28	28 (700)	134.00	10 / bundle
JY-A0434-30	30 (750)	143.00	10 / bundle

SQUARE NUT



REGULAR

Catalog no.	Nominal Size(mm)	Thread per Inch (mm)	Approx. Weight (Kg./1100 Pcs.)	Standard Pkg. Qty. / Carton
JY-AOS38R	0.375 (9)	16 (400)	1.20	2,000
JY-A0512R	0.5 (13)	13 (325)	2.50	1,000
JY-AOSSSR	0.625 (16)	11 (275)	4.20	500
JY-A0534R	0.75 (19)	10 (250)	6.50	400
JY-A0578R	0.875 (22)	9 (225)	11.00	250
JY-A0338-06	6 (150)	3(75)	9.20	150

HEAVY

Catalog no.	Nominal Size(mm)	Thread per Inch (mm)	Approx. Weight (Kg./1100 Pcs.)	Standard Pkg. Qty. / Carton
A0558H	0.625 (16)	0.625 (16)	5.80	500
JY-AOS34H	0.75 (19)	0.75 (19)	10.90	250
JY-A0578H	0.875 (22)	0.875 (22)	19.50	150
JY-AOS10H	1 (25)	1 (25)	23.50	100

1 / 2 INCH DIAMETER

Minimum Tensile Strength: 3,500 Kg



Catalog no.	Nominal Size(mm)	Thread per Inch (mm)	Approx. Weight (Kg./1100 Pcs.)	Standard Pkg. Qty. / Carton
JY-A0638	3/8 (9)	16 (400)	7.90	1,000
JY-A0612	1/2 (13)	13 (325)	8.80	1,000
JY-A0658	5/8 (16)	11 (275)	9.90	1,000
JY-A0634	3/4 (19)	10 (250)	10.80	1,000

LAG SCREW

As all thread bolts go through the pole, the two ends of the double arming bolt will be locked and secured by nut and washer.



Catalog no.	Diameter	Bolt length Inch(mm)	Thread Length Inch(mm)	Approx. Weight (Kg./1100 Pcs.)	Standard Pkg. Qty. /Carton
JY-A0712G3	1/2	3 (75)	2 (50)	8.50	350
JY-A0712G4	1/2	4 (100)	2-1/2 (63)	10.80	250
JY-A0712G5	1/2	5 (125)	3 (75)	12.60	250

FETTER DRIVE REGULAR POINT

Catalog no.	Diameter	Bolt length Inch(mm)	Thread Length Inch(mm)	Approx. Weight (Kg./1100 Pcs.)	Standard Pkg. Qty. /Carton
JY-A0712F3	1/2	3 (75)	2 (50)	8.60	350
JY-A0712F4	1/2	4 (100)	2-1/2 (63)	10.80	250
JY-A0712FS	1/2	5 (125)	3 (75)	12.70	250
JY-A0758FS	5/8	5 (125)	3 (75)	20.00	250

WASHERS

Hot Dip Galvanized



ROUND WASHER

Catalog no.	Outside Diameter(Inch)	Thickness	Hole Diameter(Inch)	For Bolt Diameter(Inch)	Approx. Weight (Kg./1100 Pcs.)	Standard Pkg. Qty. /Carton
JY-A0838R	1	14	7/16	3/8	0.93	0.93
JY-A0838R1	1-1/4	14	9/16	3/8	1.52	1.52
JY-A0812R	1-3/8	12	9/16	1/2	2.00	2.00
JY-A0858R	1-3/4	10	11/16	5/8	4.00	4.00
JY-A0834R	2	9	13/16	3/4	5.10	5.10

SQUARE WASHER

As all thread bolts go through the pole, the two ends of the double arm-
ing bolt will be locked and secured by nut and washer.



Catalog no.	Size(Inch)	Hole Diameter (Inch)	For Bolt Diameter(Inch)	Approximately Weight (Kg./100 Pcs.)	Standard Pkg. Qty. /Carton
JY-A08F2-01	2 X 2 X 1/8	9/16	1/2	5.70	400
JY-A08F2-02	2 X 2 X 1/8	11/16	5/8	5.40	400
JY-A08F2-03	2 X 2 X 3/16	11/16	5/8	8.10	400
JY-A08F2-04	2 X 2 X 3/16	13/16	3/4	7.90	400
JY-A08F2-05	2-1/2 X 2-1/2 X 3/16	11/16	5/8	14.00	300
JY-A08F2-06	2-1/2 X 2-1/2 X 3/16	13/16	3/4	13.50	300
JY-A08F2-07	2-1/4 X 2-1/4 X 3/16	11/16	5/8	11.00	300

Catalog no.	Size(Inch)	Hole Diameter (Inch)	For Bolt Diameter(Inch)	Approximately Weight (Kg./100 Pcs.)	Standard Pkg. Qty. /Carton
A08F2-08	2-1/4 X 2-1/4 X 3/16	13/16	3/4	10.60	300
JY-A08F3-01	3 X 3 X 3/16	11/16	5/8	19.50	150
JY-A08F3-02	3 X 3 X 3/16	13/16	3/4	19.20	150
JY-A08F4-01	4 X 4 X 1/4	11/16	5/8	47.00	450
JY-A08F4-02	4 X 4 X 1/4	13/16	3/4	46.60	450
JY-A08F4-03	4 X 4 X 1/2	11/16	5/8	94.00	450
JY-A08F4-04	4 X 4 X 1/2	13/16	3/4	93.40	450
JY-A08F4-05	4 X 4 X 3/16	11/16	5/8	34.48	450
JY-A08F4-06	4 X 4 X 3/16	13/16	3/4	34.15	450

SQUARE WASHER

As all thread bolts go through the pole, the two ends of the double arming bolt will be locked and secured by nut and washer.



Catalog no.	Size(Inch)	Hole Diameter (Inch)	For Bolt Diameter(Inch)	Approximately Weight (Kg./100 Pcs.)	Standard Pkg. Qty. /Carton
JY-A08C2-01	2 X 2 X 1/8	9/16	1/2	5.70	400
JY-A08C2-02	2 X 2 X 1/8	11/16	5/8	5.40	400
JY-A08C2-03	2 X 2 X 3/16	11/16	5/8	8.10	400
JY-A08C2-04	2 X 2 X 3/16	13/16	3/4	7.90	400
JY-A08C2-05	2-1/2 X 2-1/2 X 3/16	11/16	5/8	14.00	300
JY-A08C2-06	2-1/2 X 2-1/2 X 3/16	13/16	3/4	13.50	300
JY-A08C2-07	2-1/4 X 2-1/4 X 3/16	11/16	5/8	11.00	300
JY-A08C2-08	2-1/4 X 2-1/4 X 3/16	13/16	3/4	10.60	300
JY-A08C3-01	3 X 3 X 3/16	11/16	5/8	19.50	150
JY-A08C3-02	3 X 3 X 3/16	13/16	3/4	19.20	150
JY-A08C4-01	4 X 4 X 1/4	11/16	5/8	47.00	450
JY-A08C4-02	4 X 4 X 1/4	13/16	3/4	46.60	450
JY-A08C4-03	4 X 4 X 1/2	11/16	5/8	94.00	450
JY-A08C4-04	4 X 4 X 1/2	13/16	3/4	93.40	450
JY-A08C4-05	4 X 4 X 3/16	11/16	5/8	34.48	450
JY-A08C4-06	4 X 4 X 3/16	13/16	3/4	34.15	450

SPRING LOCK WASHER

The spring washer is assembled with the bolt and nut. The spring washer makes the fastening more tightly.



Catalog no.	Size Section Inch	For Bolt Diameter(Inch)	Approx. Weight (Kg./1100 Pcs.)	Standard Pkg. Qty. / Carton
JY-A0938LW	0.41X0.094	3/8	3.60	5,000
JY-A0912LW	0.171 X 0.125	1/2	5.00	3,500
JY-A0958LW	0.203 X 0.156	5/8	1.00	2,000
JY-A0934LW	0.234 X 0.188	3/4	1.40	1,250

OVAL EYE NUT

Oval eye nut are mainly designed for use on the threaded end of 1/2 or 5/8 inch machine bolts passed vertically through cross arm for attaching dead end clamp.



Catalog no.	Bolt Diameter Inch	A	B	C	D	E	Weight kg/100pcs	Standard Packing Qty/Carton
JY-E1330-58	5/8	13.5	44.5	38	65	80	30.00	50
JY-E1330-34	3/4	13.5	44.5	38	65	80	30.00	50

Catalog no.	Bolt diameter Inch	Slotted HoleInch	A	B	C	D	Weight Kg/ 100pcs	Standard packing Qty/carton
JY-E1410-58	5/8	17 X 25	13.5	77	16	58	52	50
JY-E1410-34	3/4	21 X 26	13.5	77	16	58	52	50



THIMBLE EYE NUT

Thimble eye nut are assembled with the thread end of 1/2 or 5/8 inch eye bolt, which go across the wooden pole for supporting the strain insulators to the dead end wire.

Catalog no.	Bolt diameter Inch	Strand Size Inch	Weight/100pcs	Standard package Qty/ Carton
JY-GOS31-58	5/8	1/2	40.00	100
JY-G0531-34	3/4	1/2	40.00	100



THIMBLE EYE NUT



Catalog no.	Bolt Diameter Inch	Strand Size Inch	Weight/100pcs	Standard package Qty/ Carton
JY-GOS32-58	5/8	1/2	83.50	30
JY-G0532-34	3/4	1/2	79.10	30

EYE LET

The surface treatment of the eye nut is hot dip galvanization. The required mark and the size 5/8 or 3/4 appear on the bottom of the eye nut.

Catalog no.	Bolts Diameter Inch	Strand size Inch	Weight/100pcs	Standard packing Qty/Carton
JY-G0950 - 58	5/8	1/2	60	50
JY-G0950 0-50 34	3/4	1/2	60	50



STRAIGHT THIMBLE EYELET

Catalog no.	Bolts Diameter Inch	Strand size Inch	Weight/100pcs	Standard packing Qty/ Carton
JY-G0950 - 58	5/8	1/2	60	50
JY-G0950 0-50 34	3/4	1/2	60	50

OVAL EYE BOLT

Oval eye bolt is widely used on the wooden pole to connect the dead-end insulator in electric power line or overhead line. Oval eye bolt is designed with an over thimble head which is a locked circle, when connected with the clevis or dead-end insulator.



Catalog no.	A	B	C	D	L	T	Weight kg/ 100pcs	Standard packing Qty/ carton
JY-E1504-08	5/8	1-1/2	2	5/8	8	4	66.00	35
JY-E1504-10	5/8	1-1/2	2	5/8	10	6	69.50	30
JY-E1504-12	5/8	1-1/2	2	5/8	12	6	78.50	30
JY-E1505-08	3/4	1-1/2	2	3/4	8	4	96.50	30
JY-EISOS-10	3/4	1-1/2	2	3/4	10	6	105.50	20
JY-EISOS-12	3/4	1-1/2	2	3/4	12	6	114.50	25

THIMBLE EYE BOLT

Thimble eye bolt is designed to connect the dead end guy grip or attaching the guy wires to pole or concrete line.



Catalog no.	weight/Pcs	Stock No.	D	L	T	Thread Per Inch	Standard Package Qty/ Carton
JY-G0650-08	52.50	G0652-08	5/8	8	4	11	30
JY-G0650-10	55.00	G0652 -10	5/8	10	4	11	30
JY-G0650-12	65.00	G0652-12	5/8	12	6	11	30
JY-G0650-14	70.00	G0652-14	5/8	14	6	11	30
JY-G0650-16	77.00	G0652-16	5/8	16	6	11	30
JY-G0651-10	80.00	G0653 -10	3/4	10	4	10	25
JY-G0651-12	90.00	G0653 -12	3/4	12	6	10	25
JY-G0651-14	100.00	G0653-14	3/4	14	6	10	25
JY-G0651-16	113.00	G0653 -16	3/4	16	6	10	25

SPOOL BOLT

SINGLE UPSET BOLT 5/8"

Catalog no.	L	A	B	Weight/100pcs	Standard package quantity /carton
JY-F0110-08	8	12-1/2	4	63.00	35
JY-F0110-09	9	13-1/3	4	68.00	30
JY-F0110-10	10	14-1/2	4	60.00	30
JY-F0110-12	12	16-1/2	6	80.00	30
JY-F0110-14	14	18-1/2	6	90.00	35

DOUBLE UPSET BOLT 5/8"

Catalog no.	L	A	B	Weight/100pcs	Standard package quantity /carton
JY-F011t -08	8	14	4	73.00	30
JY-F0111-09	9	15	4	77.00	30
JY-F011t-10	10	16	4	65.00	35
JY-F011t-12	12	18	6	72.00	35
JY-F011t-14	14	20	6	80.00	35



Hebei Rax Industry CO.,LTD



Address:

Wutan Building, Bohai Road, Renqiu City, Hebei Province, China



+86 15033685721



Email: joy@electricpowerfitting.com